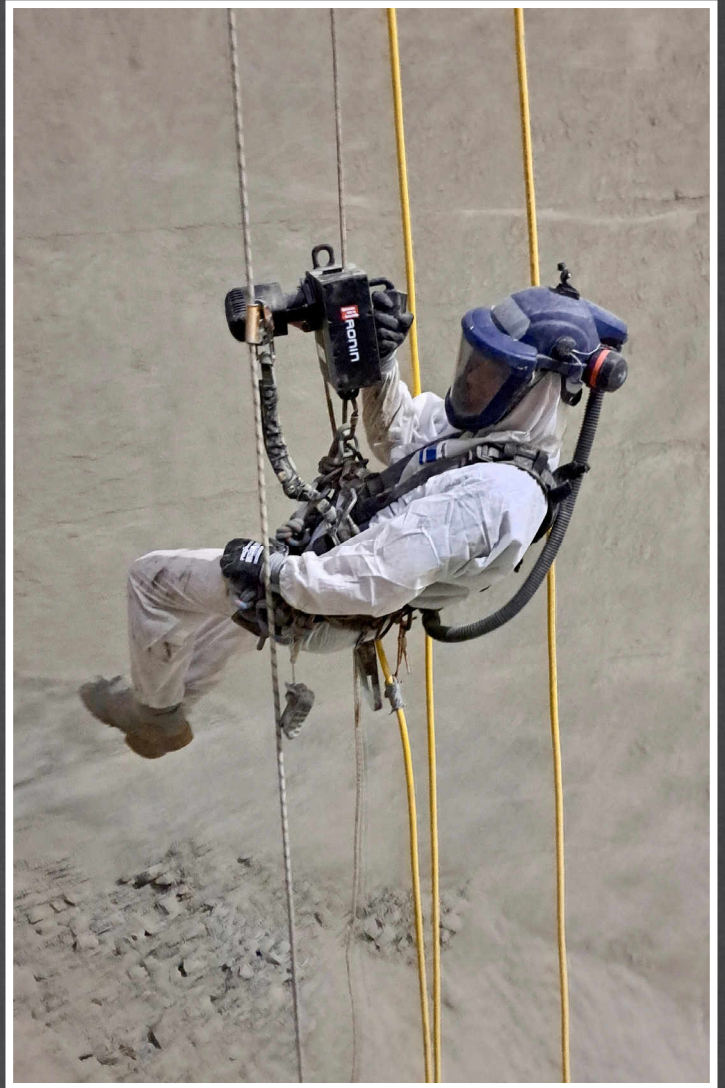




**POWER
ASCENDERS**
ROPE & ACCESSORIES



2024

C A T A L O G



POWER ASCENDER **BENEFITS**

TL

DEPTH:
13.50 in (34.29 cm)



LIFT

DEPTH:
15.39 in (39.09 cm)



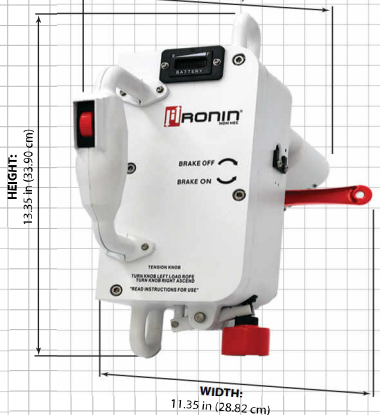
STL

DEPTH:
13.50 in (34.29 cm)



NON-HEC

DEPTH:
15.39 in (39.09 cm)



How do Powered Rope Ascenders Impact the Workforce?

Ronin Ascenders are powerful tools that have revolutionized safety and injury prevention in the workplace by removing the physical strain and fatigue of climbing. They can increase the efficiency of the At-Height workforce while helping keep the workers safe. They will even add years to the lifetime working careers of those valuable At Height professionals.

For 2024, our lineup of Ronin's includes the TL, the lightest and smallest ascender on the marketplace, the Lift, and our Non-Human Cargo (Non-HEC) model. For our Military, Police, Search, and Rescue customers, we are showcasing the STL, which is the same size and weight as the TL but has increased speed.

At Ronin, we develop battery-powered ascenders to manage heavy loads in challenging environments to aid in the completion of any winching or hauling task. All this while presenting the lightest, smallest, and most powerful power ascender tools on the market.

RONIN TITAN LIFT KIT (TL) INCLUDES |

- 1 Ronin TL Ascender w/Anti-Panic Handle and Reverse Function
- 1 Wireless Remote
- 1 Li-Ion Battery, Charger & Charger Cable
- 1 Hard Case w/Custom Foam
- 1 Rope Brush
- 1 Rubber Motor Protector
- 1 Perfect Burn Tip



PART # KIT1011-11

FEATURES / BENEFITS

- Safe working load 400 lbs. (181 kg)
- Variable Speed Control (0.5 - 1.5 ft./sec)
- Ascend 800 ft. on a full-charge (@ 200 lbs. lift)
- Hands-Free Breaking System w/Gravity-Feed Descent up to 3.0 ft./sec.
- Automatic End-Feed Rope Loading Securely Captures Rope Inside the Lift & Prevents Accidental Detachment
- Supports Multi-Pitch Angled Ascents
- Hot-Swappable Lithium-Ion Battery
- Operating Temperature: -4° to 120° F (-20° to 49° C)
- Mechanical Advantage Allowed up to 4:1 ratio, lift up to 1600 lbs. (725 kg)
- CE Certified as a Personal Lifting Device & Material Handler

The World's Smallest, Lightest Powered Asender

The Ronin TL is changing AT-HEIGHT Work. It helps prevent injury caused by fatigue and increases efficiency. It can even help extend AT-HEIGHT working careers. Despite its compact size, this powerful tool was developed to manage heavy loads in harsh environments. The automatic end-feed rope system protects against detachment while providing operational capabilities not present in other ascender options.

Width (W)
7.65 inches
Depth (D)
13.50 inches

Height (H)
11.75 inches
Weight w/Battery
19 lbs

INDUSTRIES

Power Utilities	Construction
Oil & Gas	Building Maintenance
Wind Tower Access	SPRAT/IRATA
Cell Tower Access	Rope Work Support
Arborcare	Confined Space
Entertainment Rigging	Sports/Recreation

RONIN SHINOBI TACTICAL LIFT KIT (STL) INCLUDES |

- 1 Ronin STL Ascender w/Anti-Panic Handle and Reverse Function
- 1 Wireless Remote
- 1 Li-Ion Battery w/Integral Charge Indicator, Charger & Charger Cable
- 1 Black Rope Brush
- 1 Hardcase w/Custom Foam
- 1 Rubber Motor Protector
- 1 Perfect Burn Tip



PART # KIT1011-14APWR

FEATURES / BENEFITS

- Safe working load 350 lbs. (159 kg)
- Variable Speed Control of (0.5- 2.0 ft./sec)
- Hands-Free Braking System w/ Gravity Feed Descent up to 4.5ft/sec
- Automatic End-Feed Rope Loading Securely Captures Rope Inside the Lift & Prevents Accidental Detachment
- Ascends 650 ft. on a Full Charge (@ 200 lbs.)
- Supports Multi-Pitch Angled Ascents
- Hot-Swappable Lithium-Ion Battery w/ Integral Charge Indicator
- Dust/Water Resistant IP54 Rating
- Quieter Gearbox/Motor Combination
- Operating Temperature Range: -4° F to 120° F (-20° C to 49° C)
- Battery Charge Indicator w/Blackout Mode

The World's Smallest, Lightest and Fastest Powered Ascender

No longer reserved for your special ops, the STL can be deployed across your entire force serving multiple functions from gear-hauling to rescue.

Confidently hand the STL off to any of your units to enhance their operational capabilities. The Ronin Tactical Lift has been developed to manage heavy loads in harsh environments despite its extremely compact size.

Length (L)
7.65 inches
Width (W)
13.50 inches

Height (H)
11.75 inches
Weight w/Battery
19 lbs

GOVERNMENT SECTORS

Search & Rescue	Infrastructure Maintenance
Tactical Ops	Cargo Loading
Extraction/Evacuation	Inspections
Winching/Hauling	Rope Access Training



PART # KIT2805-11APWR

PART # KIT2805-11APWR-W

World's most accessible & affordable powered ascender in the market today.

Safe working load of 400 lbs. (181 kg) and weighs only 24 lbs. (11 kg) with the battery.

This powerful tool has revolutionized safety and injury prevention in the workplace by removing physical strain and fatigue. Ronin Lift was developed to manage heavy loads in challenging environments to help perform any task.

Ronin Lift maintains controlled acceleration through its variable-speed thumbwheel up to the maximum safe working load of 400 lbs. (181 kg). Ascend 800 ft. on a full-charge (@ 200 lbs.)

Easily identify material hauling equipment from personnel lifting equipment

The white powder-coated Non-HEC Lift is a dedicated Lift designated for material handling that will handle any hauling needs. The safe working load is 400 lbs. (181 Kg), but you can add mechanical advantages up to 4:1, which means loads of up to 1600 lbs. (725 kg) can be accommodated. The Ronin Lift anchor points are rated at 5,000 lbs. for confident rigging.

With the wireless remote function, your teams can raise or lower loads from a safe distance. The variable speed control is smooth and makes it easy to control the heaviest loads in complete confidence with the Ronin Non-HEC Lift. Pair up your Non-HEC Lift with one of our Pole Mounts, or Tripod Mounts. Lift 800 ft. on a full-charge (@ 200 lbs.)

RONIN LIFT KIT INCLUDES |

- 1 Ronin Lift Ascender w/Anti-Panic Handle and Reverse Function
- 1 Wireless Remote
- 1 Li-Ion Battery, Charger & Charger Cable
- 1 Hard Case w/Custom Foam
- 1 Rope Brush
- 1 Rubber Motor Protector
- 1 Perfect Burn Tip

INDUSTRIES

- | | |
|-----------------------|----------------------|
| Power Utilities | Construction |
| Oil & Gas | Building Maintenance |
| Wind Tower Access | SPRAT/IRATA |
| Cell Tower Access | Rope Work Support |
| Arborcare | Confined Space |
| Entertainment Rigging | Sports/Recreation |

RONIN HP ROPE BY MARLOW ROPES |

PART # KC4662-300, 328 & 600ft - 3280ft (1000m)
Reels & Custom Lengths Available

Ronin has partnered with Marlow Ropes to create the Ronin HP rope. We can ensure you get the best performance and the most outstanding longevity with the Ronin HP rope. The rope is unique because it is low stretch and has a TechNora outer sheath with a Kernmantle red inner wear indicator to signal when to replace the rope. We can guarantee that this rope will give you the most extended number of cycles and the best performance available.



RONIN HP VERTICAL LIFELINES BY MARLOW ROPES |

PART # WKC294-30 (30ft) , WKC294-60 (60ft), WKC294-100 (100ft)

Staying safe and OSHA compliant is a requirement when using any Ronin ascender. Depending on your industry, having a secondary lifeline is mandatory. We partnered with Marlow ropes to construct a vertical lifeline compatible with existing climbing equipment.



RONIN RESCUE TRIPOD MOUNT |
 PART # 2020-1

Sometimes you need to climb down, not up. Tripods are integral to any at-height operations, including rescue. Naturally, you will need to come back up, and that is why you need the Ronin ascender. With our universal tripod mount, you will be able to mount any Ronin ascender to most standard rescue tripods. The ascender mounts quickly and is ready to go where you need it.

FEATURES |

- Used in winching operations
- Supports rescue extraction
- Mounts to standard tripods both square and round legs
- 5000+ LBS breaking strength
- ANSI rated Z359.18-2017
- FITS: **2805 & 1011 Ronin Models**

RESQMAX LINE LAUNCHER |
 PART # RS421

Many times, setting the rope can be difficult and time-consuming. Make it easier and faster with the Ronin RS421 custom line launcher kit. We worked with ResQmax, a leader in rescue line launchers, to bring you a custom kit we endorse with our ascender. With a 400ft (122m) range, using a 3mm lead-line, you can ensure you will have the power and strength to pull your climbing rope up and over the tallest structures.

FEATURES |

- 400ft (122m) max distance.
- Supports a heavy-duty lead line.
- Support quick line setting over a tower or structure.
- NFPA certified for rescue.
- Specifically set up to support any model Ronin ascender.



At Ronin, **we never want you left behind** with older technology. We designed our ascenders to be compatible with newer features and bring them up to today's standards.

ANTI-PANIC HANDLE |
 SERVICE PART # S2805-10222-1

Add a level of safety and control to your Ronin Lift ascender with the Anti-Panic Handle. The Anti-Panic Handle requires an additional action by the operator to activate the variable speed thumbwheel. It will eliminate the possibility of accidental uncontrolled commands when operating the Ronin Lift.



REMOTE CONTROL UPGRADE |
 SERVICE PART # S005

When manual control is not your best option, the Ronin Remote Control provides you with the freedom to operate any Ronin ascender wirelessly. With a wireless range of up to 300ft (91m) and a discreet radio signal, the remote is ready to assist you in various ways. The wireless remote gives you the same variable speed control as the Ronin Lifts handle.





RONIN LIFT BATTERY |

PART # 1011-220 For TL 1011-11 and STL 1011-14APWR

The Ronin Lift fully supports hot-swap change-outs. With an extra battery, your work with the ascender will be more efficient and always ready to go. Batteries are easily installed on and off the Ronin Lift and can be switched out mid-line. If you run out of battery power on the way up, no problem. The Ronin Lift gravity descent system will get you down for a quick battery change. All batteries come with a charger.

FEATURES |

Nylon Strap - Battery Type: Lithium-Ion - Dust/Water Protected IP64 Rating - Hi-Impact PC/ABS case - Quick charge time, **approximately 2 hrs.** - Secure battery latch for upside-down operation - Emergency Stop - Battery Indicator Light

Part # 2805-5088-22 Battery for Ronin Lift 2805-11-22 (NOT SHOWN)

FRICITION BOLLARD |

PART # 810200

Running rope across anything causes friction and wear. Protect your Ronin Lift housing from the friction built up by tending the tailing line with our rope bollard.



ROPE BRUSH |

PART # 200030

Climbing is a dirty business and ropes tend to pick up dirt & debris. The Ronin Rope brush can help keep these foreign particles out of your ascender.



RUBBER MOTOR PROTECTOR |

PART # 770530

The Ronin Lift rubber motor protector simply slips over the motor cover and creates an extra protection barrier for both the Ronin Lift and the infrastructure you are working on. **FITS 2805 & 1011 Models**



PERFECT BURN KIT |

PART # 2000-1

The factory burned ends or hot knife cuts aren't enough. To assist in this process, we have developed a Perfect Burn Kit.



HARD CASE |

PART # 2805-100878

Keep your Ronin Lift ascender in safe working order with the Ronin Hard Case. With its pre-cut foam, the Ronin Lift and Ronin batteries will sit tight and be protected through travel and shipping. The case is fully waterproof and designed to handle the abuse you do not want your equipment to experience. You will never have to worry about your equipment getting damaged on the way to the job site again, with the Ronin Hard case.

